

BERT FRANK

BIDE WALL LIGHT

MAINTENANCE

- Lacquered brass should be wiped with a soft duster.
- Stone Facade should be gently cleaned with a suitable marble cleaner and a clean, lint free cloth.
- Do not clean with any other liquid, chemical or abrasive cleaners.
- All electrical work must be conducted by a qualified electrician.

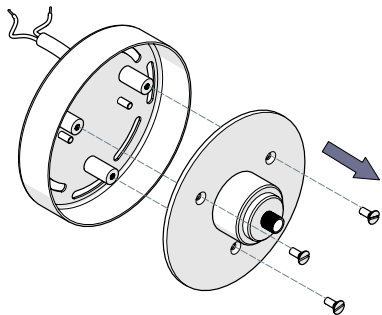
TECHNICAL

- 240V constant voltage IP rated LED supplied
- All electrical work must be done by a qualified electrician
- Correct installation of fixture in a wet area is the responsibility of the installer.

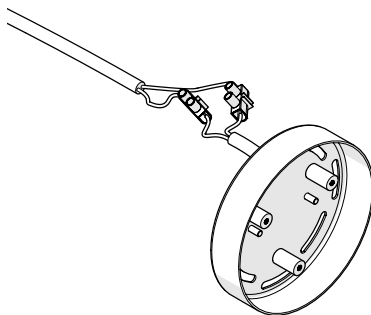
www.berfrank.co.uk
+44 (0)207 164 6482

INSTRUCTION

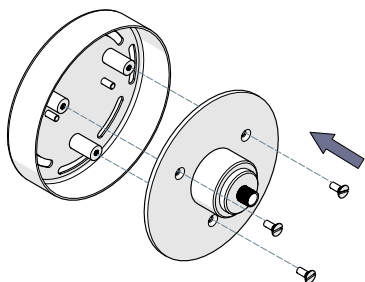
- 1
- Remove 3x screws using a Flat head screw driver (not supplied)
 - Remove diffuser with tri-bracket attached.



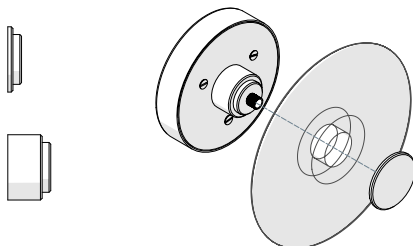
- 2
- Consider position of wall light, NOTE: flex exit is 35mm off centre. Feed mains power through wall hole.
 - All electrical work must be done by a qualified electrician.
 - Make electrical connection between mains power and fixture.



- 3
- Mount fixture to wall using suitable fixings, (fixing not supplied)
 - Replace diffuser with tri-bracket and 3x screws



- 4
- Decide which stone mount is most suitable and remove/attach required mount.
 - Carefully place stone facade onto stone mount and secure using brass cap.



This product is only suitable for connection to the native power supply to which the unit was specifically manufactured. It is for indoor/ outdoor use, and is suitable for a bathroom location. Correct installation of fixture in a wet area is the responsibility of the installer.

If the Class II, double insulated symbol is on the lamp, it does not require an Earth, and Live or Neutral must not be connected to Earth. If there is no such symbol, then the lamp must be Earthed.

Under no circumstances must this lamp be covered with any material as this could pose a safety hazard. It must be used on a stable, flat surface.

Never fit bulbs of a higher wattage than those specified on the label, as these may cause overheating and damage the fitting. If the mains cable becomes damaged it must only be replaced by a technically competent, qualified person.

Allow 10 minutes to cool before replacing, adjusting or cleaning. Clean with specified cleaners only. Do not use other liquid, chemical or abrasive cleaners on this product.

If you are in any doubt about your competence please consult a qualified electrician. If any modification is made it will invalidate the warranty and may render the product unsafe.
